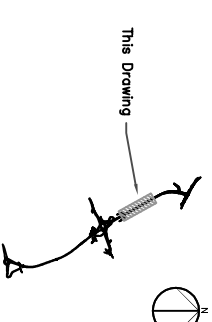
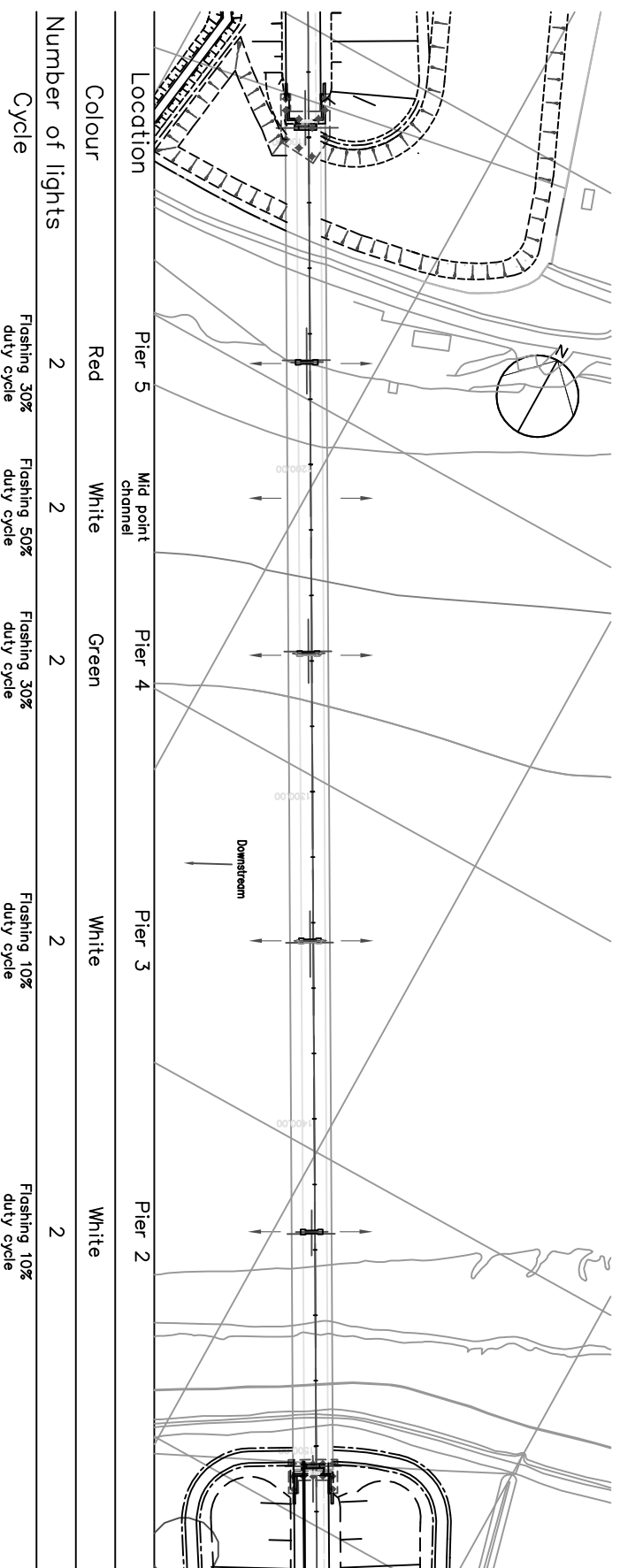


Key Plan



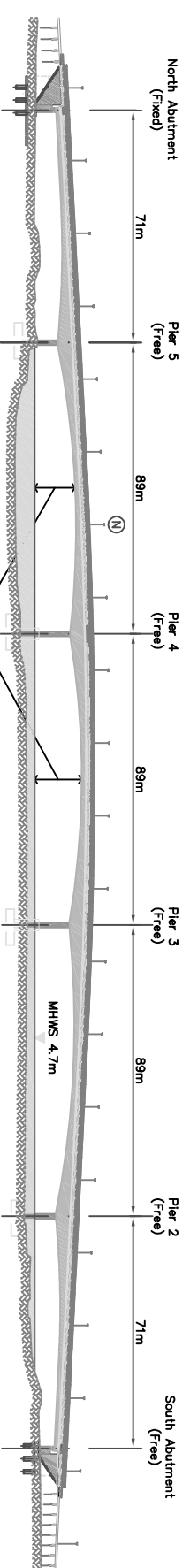
Notes

- Specification of Navigation Lights.
1. Light to be LED units with a range of 2 nautical miles, type Hydrosphere VLB 42.
 2. Supply unit: Type LED 0070 (12v) located inside lighting columns together with isolating switch for supply to each pair of navigation lights.
 3. Navigation lights at piers refer to drawing TH/BARN/D/606 and 607.



PLAN SHOWING NAVIGATION LIGHT LOCATIONS

Scale 1:1000



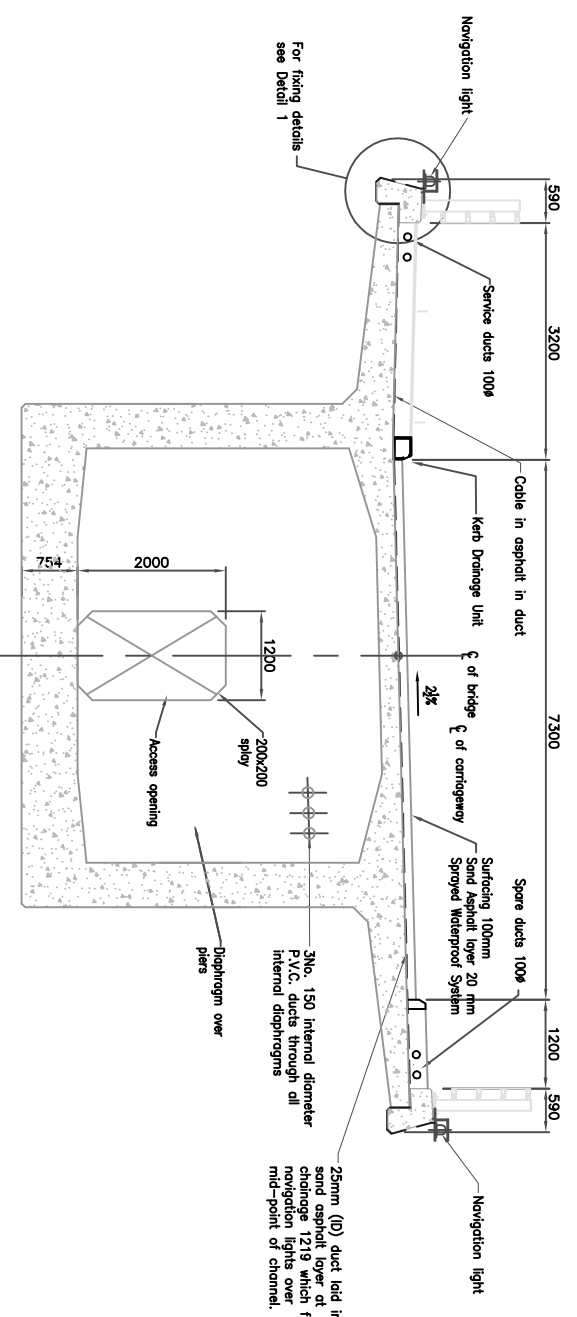
Lighting column marked (N) contains feed to mid channel navigation light location

Pier Navigation Lights have solar power collectors mounted on downstream face of piers. Power to upstream lights by 12V cable in galvanised conduit fixed to piers.

Span Centreline Navigation Clearances (metres above MHWS)		
Span 5-4	Span 4-3	
12.34	14.36	

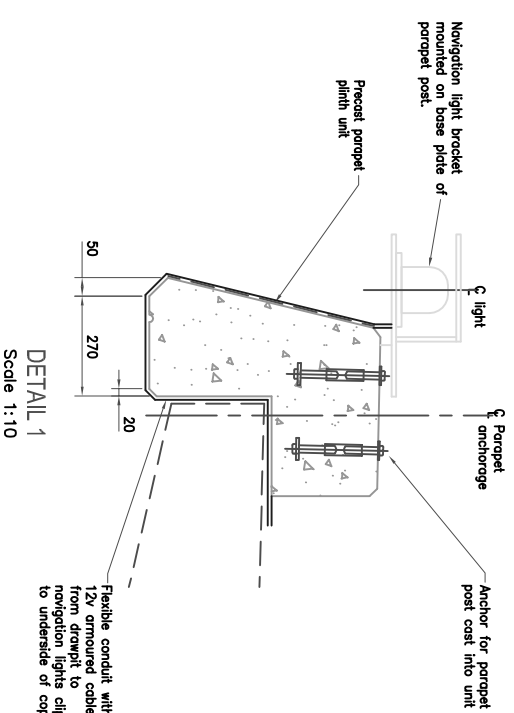
ELEVATION

Scale 1:1000



TYPICAL SECTION AT MID SPAN 4/5 LIGHT LOCATION

Scale 1:50



DETAIL 1

Scale 1:10

AS BUILT

Rev	By	Check/Approved	Date	Description
0	ASB	NSF	27/08/2008	ISSUE FOR BIDDING

Employer



Project
BARNSTABLE
WESTERN BYPASS

Drawing
TAW BRIDGE
NAVIGATION LIGHTS

Drawn by: AFP	Date: 09/11/05
Checked by: NSF	Date: 10/11/05
Approved by: SSW	Date: 10/11/05
Drawing No:	Revision
B.TAW(3)/D603/AB	

Drawing Scale: As noted at A1